

7. Why do you think jellies are important?



8. What is one thing that you can do to help keep jellies and the ocean healthy?



SHEDD AQUARIUM



ELEMENTARY STUDENT GUIDE
Jellies Special Exhibit



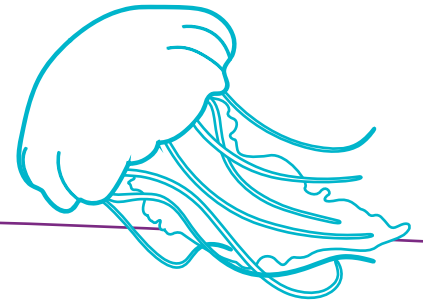
John G. Shedd Aquarium
1200 South Lake Shore Drive
Chicago, Illinois 60605

Jellies is generously
sponsored by
Walgreens

- 1.** Pick a jelly species and sketch it below.
Be sure to label all its body parts.



- 4.** Draw a picture of the sea jelly life cycle.



- 2.** Describe what a jelly looks like and how it moves in your own words.

- 3.** Are jellies fish?
Why or why not?

- 5.** What kinds of adaptations do you think jellies have to help them survive?

- 6.** Find and observe two different types of jellies. How are they similar and different?

